



South Parade, London, W4
Guide Price £2,850,000

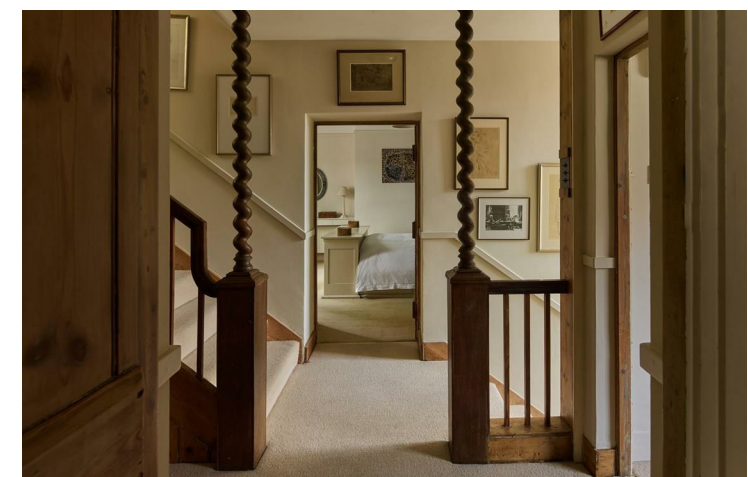
WHITMAN & CO.
SALES · LETTINGS · COMMERCIAL



This Grade II* listed house was constructed in 1891 by the architect C. F. A. Voysey for the artist J. W. Forster. 14 South Parade is one of Voysey's first houses, perhaps his best known, and as such is of great historical importance. Designed evidently in conscious opposition to the rest of the Bedford Park garden suburb, a white house in the very centre of the red-brick revival, this exquisite landmark property is arranged over three floors and totals approximately 2500sqft. With a fabulous 30'9x17'6 studio room with a vaulted 5.5m high ceiling and mezzanine across the top floor being the jewel in the crown, the further accommodation across the ground and first floors comprise a principal bedroom with ensuite bathroom, three further bedrooms, a family bathroom, 17'9x14'10 dining room, 18'8x14'5 reception room, kitchen/breakfast room, spacious hallway and landings, ground floor shower room with WC and utility space and a larder.

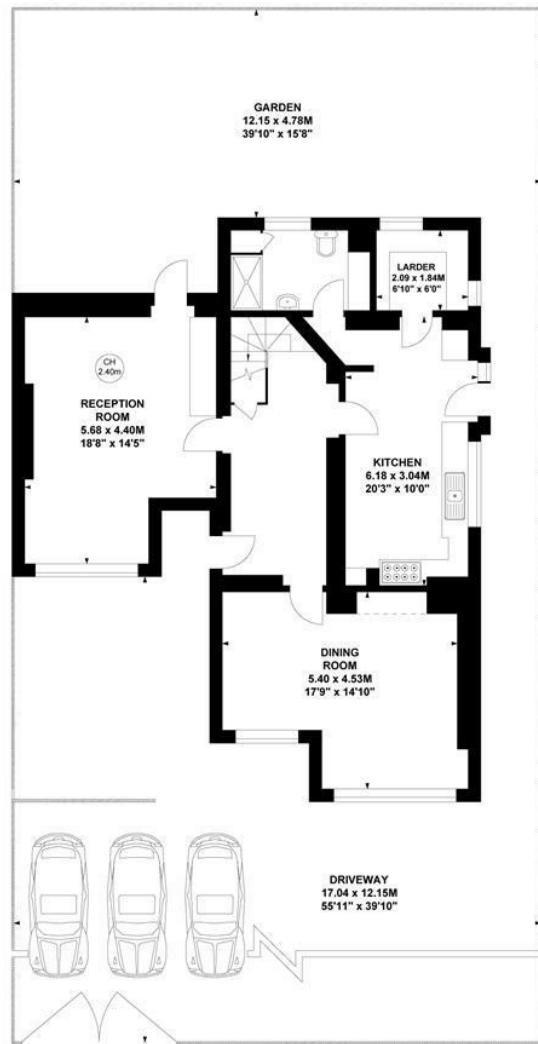
The house benefits from a generous frontage set behind electric gates with off-street parking for several cars and a lovely secluded rear garden.

Superbly positioned, the house overlooks the green and is within a short walk of Chiswick High Road's shops, cafes and restaurants, whilst being only a 2-3 minute walk from Turnham Green station. Further transport links include local bus routes and the A4/M4 for routes in and out of London.

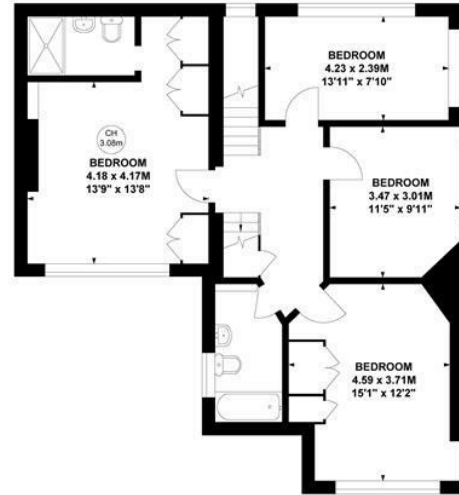


South Parade, W4

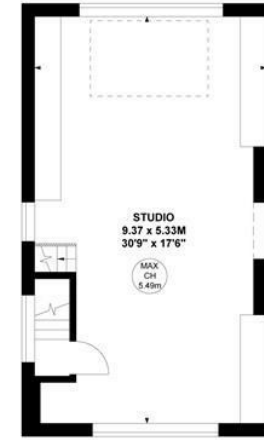
Approximate Gross Internal Area
230.25 sq m / 2478 sq ft



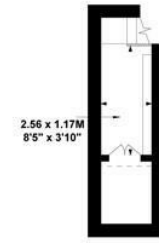
Ground Floor



First Floor



Second Floor



Mezzanine

Key :
CH - Ceiling Height

**Not to scale, for guidance only and must not be relied upon as a statement of fact.
All measurements and areas are approximate only**

- Constructed by the architect C. F. A. Voysey
- Fabulous 30'9x17'6 studio room with vaulted 5.5m high ceiling
- Off-street parking for several cars

- Grade II* listed detached house
- Four beds/three baths
- Bedford Park Conservation area

Tenure - Freehold
Local Authority - Ealing
Council Tax - Band H

